

Building Information

Building Profile:	Single Slope		
Width:	50'		
Length:	70'		
Eave Hgt:	18'		CLEAR SPAN
Roof Slope:	2	/ 12"	
Purlin Depth:	8"	Bypass	

SW Bay Spacing:	23' - 24' - 23'			
FSW Girt Depth:	8"	Bypass	BSW Girt Depth:	8"
LEW Girt Depth:	8"	Flush	REW Girt Depth:	8"
				Bypass
				Flush

Left Endwall:	End Framing:	Non-Expandable Rigid Frame – Fully Sheeted - Columns To Floor		
Column Spacing:	(BSW to FSW)	25' - 25'		

Right Endwall:	End Framing:	Non-Expandable Rigid Frame – Fully Sheeted - Columns To Floor		
Column Spacing:	(FSW to BSW)	25' - 25'		

Bracing Conditions:

Front SW:	Portal Frame (Wind Bent)
Back SW:	Portal Frame (Wind Bent)
Left EW:	Not Allowed
Right EW:	Not Allowed

Loads	Roof Covering
-------	---------------

Building Code:	IBC-21		Roof Panels:	24g Ultra-Dek Standing Seam Roof - Sig 200 Color
Live Load:	20.0	p.s.f.	UL90 Rated	Roof Panel Finish Warranty - 25 Years
(Reduction Allowed)	No		Fasteners:	Std. 12-14 x 1 1/2" LongLife S.D.S.
Ground Snow:	57.0	p.s.f.	Insulation:	Yes
Roof Snow:	40.0	p.s.f.	Thickness:	Dual Layer Fabric Assembly
Collateral Load:	3.0	p.s.f.		Must comply with IECC 2021
Wind Load:	115.0	m.p.h.	Eave Condition:	
Wind Exposure:	C		FSW:	Sculptured Eave Trim
Building Shell:	Fully Enclosed		BSW:	Snow Gutter With Downspouts w\ Eave Icing
Occupancy:	Normal			

Wall Covering

Importance Factor Snow Load:	1.00		Wall Panels:	26g "PBR" Panel - Std. Color
Importance Factor Wind Load:	1.00			Wall Panel Finish Warranty - 25 Years
Importance Factor Seismic Load:	1.00		Fasteners:	Std. 12-14 x 1 1/4" LongLife S.D.S.
Seismic Zone:	C		Insulation:	Yes
Hurricane Coast	No		Thickness:	Single Layer Fabric Assembly
Deflection:	Manufacturer Std. Deflection		By:	Must comply with IECC 2021
Snow Exposure:	1		Base Condition:	
Adjacent Bldg:	No		FSW:	Base Angle With Concrete Notch & Trim
Snow Drift:	No		BSW:	Base Angle With Concrete Notch & Trim
Seismic Coeff (Fa*Ss)	0.63		LEW:	Base Angle With Concrete Notch & Trim
			REW:	Base Angle With Concrete Notch & Trim
			Eave Closures:	Yes
			Sill Closures:	Yes

Building Accessories:

Qty.

2	49" W x 97" H Walk Door Framed Openings with Full Wrap Trims
9	49" W x 49.5" H Window Framed Openings with Full Wrap Trims
2	14' W x 16' H Overhead Door Framed Openings with Full Wrap Trims
1	16' W x 16' H Overhead Door Framed Opening with Full Wrap Trim

Additional Notes:

1. Walk door openings and window framed openings to be field located by steel building erector.
2. Provide Foundation Engineering based on Provided Soils Report.
3. Provide Additional Support for Walk Door Canopies by Others.
4. Provide Additional Support for Overhead Doors



Pre-Engineered Building Purchase Order

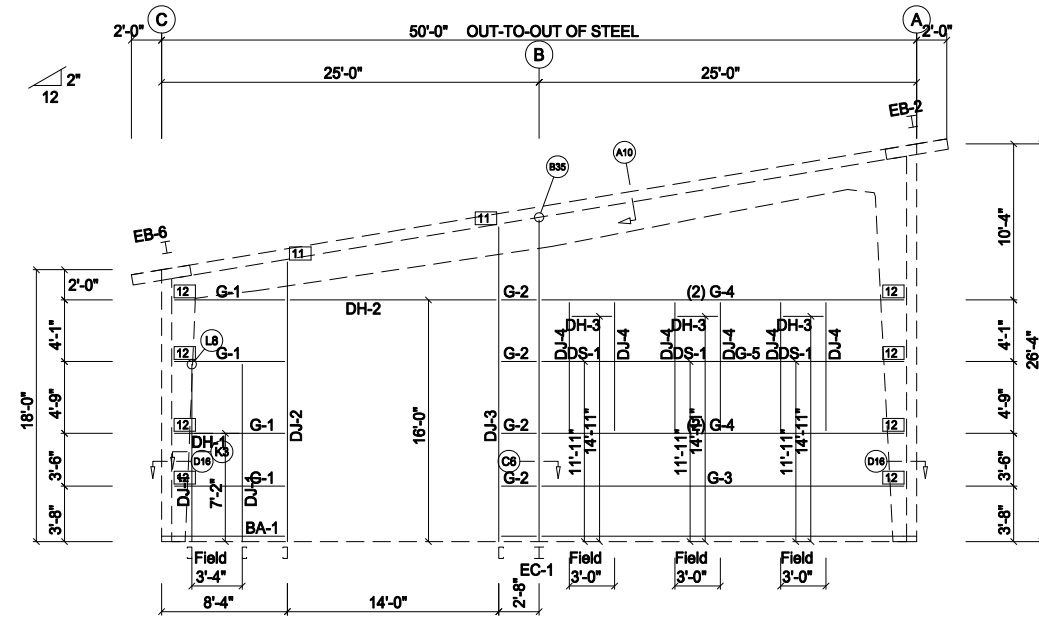
QUOTE #

CMCSV

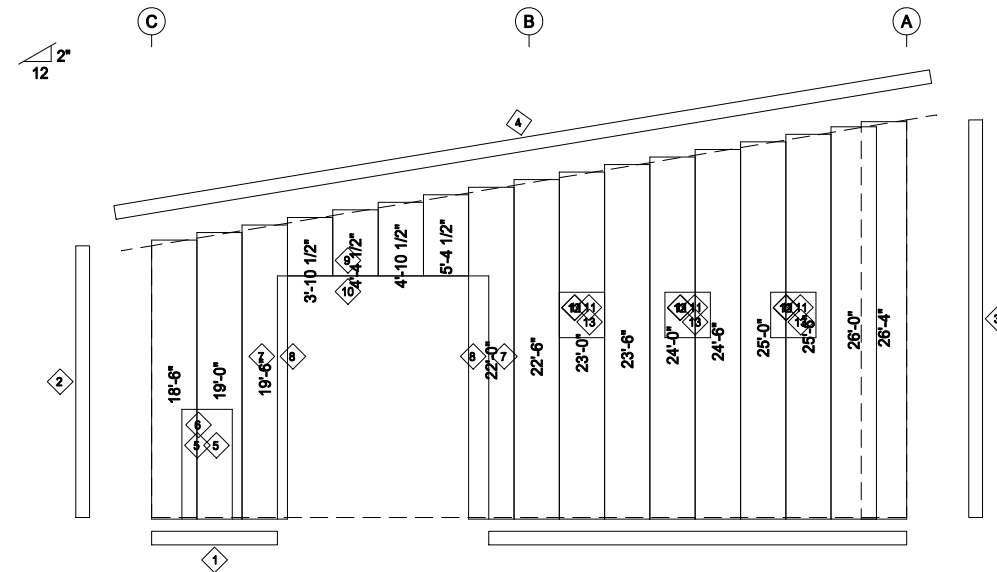
Special Building Notes

1. Walk door openings and window framed openings to be field located by steel building erector.
2. Roof Insulation = Dual Layer Fabric Assembly with 8" in the Purlin Cavity and 4" Over the top.
3. Wall Insulation = Single Layer Fabric Assembly with 9 1/4" In the Girt Cavity
4. FSS to Provide Foundation Engineering based on Provided Soils Report.
5. FSS to Provide Additional Support for Walk Door Canopies by Others.

EXCLUSIONS: Anchor Bolts, Windows, Overhead Doors, Canopies



ENDWALL FRAMING: FRAME LINE 1



ENDWALL SHEETING & TRIM: FRAME LINE 1

PANELS: 26 Ga. PBR - SIG 200 WALL

TRIM TABLE				
FRAME LINE 1				
ID	QUAN	PART	LENGTH	DETAIL
1	4	DF-01RC	10'-2"	TRIM_177
2	1	CT-01RC	18'-0"	TRIM_19
3	2	CT-01RC	13'-3"	TRIM_19
4	5	ST-01RC	10'-3"	TRIM_106
5	2	JT-01RC	7'-4"	TRIM_80
6	1	HT-01RC	3'-8"	TRIM_72
7	2	XFL-37C	16'-2"	TRIM_80
8	2	JT-01RC	16'-2"	TRIM_80
9	1	XFL-37C	14'-4"	TRIM_80
10	1	HT-01RC	14'-4"	TRIM_72
11	6	JT-01RC	3'-2"	TRIM_80
12	3	HT-01RC	3'-4"	TRIM_72
13	3	ST-01RC	3'-3"	TRIM_116

BOLT TABLE				
FRAME LINE 1				
LOCATION	QUAN	TYPE	DIA	LENGTH
Columns/Raf	2	A325	1/2"	1 1/4"
Jamb	8	A325	1/2"	1 1/4"

CONNECTION PLATES			
FRAME LINE 1			
ID	QUAN	MARK/PART	
11	2	n1	
12	8	CC21	

470


INSULATED STEEL



INSULATED SECTIONAL STEEL-BACK DOOR




PERFECT FOR COMMERCIAL AND INDUSTRIAL APPLICATIONS WHERE DURABILITY, RELIABILITY AND ENERGY EFFICIENCY ARE ESSENTIAL

- **Ribbed wood grain embossed exterior**
- **Solidly constructed for reliable performance**
 - Steel interior backing provides a durable finished appearance
 - Baked-on polyester paint finish eliminates field painting and provides long-lasting protection against the elements
 - Heavy-duty track and hardware are fabricated of high-quality galvanized steel and engineered for precise, trouble-free performance
- **Thermal performance**
 - 2" polystyrene insulation delivers a U-factor¹  of 0.23 and an R-value² of 9.83




Overhead Door™ Brand participates in the DASMA Thermal Performance Verification Program. The program verifies the thermal performance of sectional doors. The lower the U-factor rating, the better the thermal performance.

 Symbol indicates verified U-factor rating in accordance with the DASMA Thermal Performance Verification Program.



**INDUSTRY LEADING
COMMERCIAL & INDUSTRIAL SOLUTIONS**

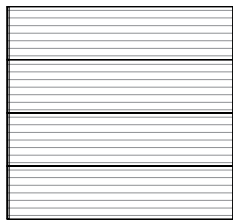
MODEL 470 INSULATED SECTIONAL STEEL-BACK DOOR

Attributes	General specifications
Rugged construction	Three-layer sandwich construction with inner and outer galvanized steel provides durability and reliability
Thermal performance	2" polystyrene insulation delivers a U-factor ¹  of 0.23 and an R-value ² of 9.83
Air resistance	Tongue-and-groove joint profile prevents air leakage between sections
Track, springs and hardware	Multiple options for track, springs and hardware available to meet any need: <ul style="list-style-type: none"> – 2" and 3" track available in standard lift, high lift, full-vertical and low headroom options – 10,000 cycle springs standard with high cycle options up to 100,000 cycles – Heavy-duty hardware options available, including 14 gauge commercial leaf end and center hinges
Warranty	10 year delamination; 10 year rust-through; 1 year material & workmanship

1 - **U-factor:** U-factor is a measure of thermal efficiency. The lower the U-factor the greater the insulating properties of the door. U-factor is independently tested and verified per ANSI/DASMA 105 using solid doors and specific product sizes.

2 - **R-value:** R-value is a measure of thermal efficiency. The higher the R-value the greater the insulating properties of the door. Overhead Door Corporation uses a calculated door section R-value for our insulated doors.

Panel and glazing options



Ribbed wood grain embossed panel



Double Thermal Acrylic (25" w by 12" h)



Clear Short (19" w by 12" h)



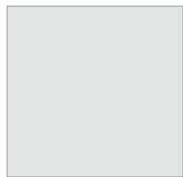
Insulated DSB (24" w by 7" h)



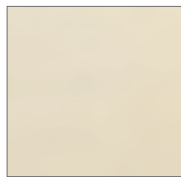
Clear Long (42" w by 13" h)

Finish options

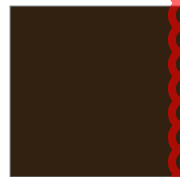
Baked-on, double-coat finish available in:



White



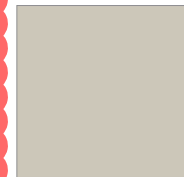
Almond



Brown



Sandstone



Desert Tan

Doors with 16.75" sections only available in White and Almond.

Actual colors may vary from brochure due to fluctuation in the printing process. Always request a color sample from your Overhead Door™ Distributor for accurate color matching.



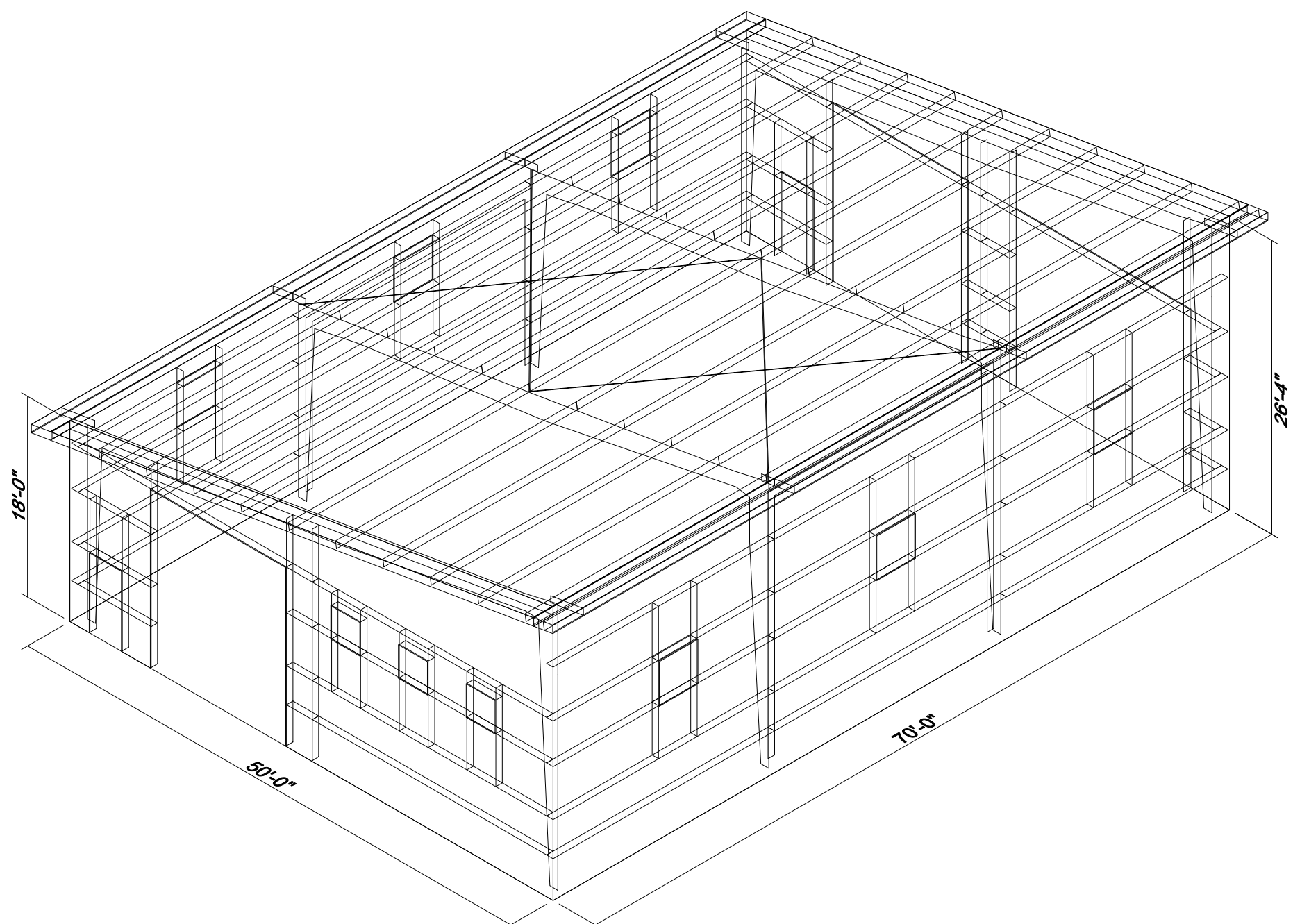
INDUSTRY LEADING
COMMERCIAL & INDUSTRIAL SOLUTIONS



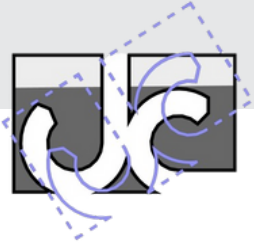
2501 S. State Hwy. 121 Bus., Suite 200, Lewisville, TX 75067

1-800-929-DOOR • sales@overheaddoor.com

overheaddoor.com



CMC - Spring Valley Maintenance Garage



Proposed Colors

Rocky Mountain NP, USA



Proposed Light

